

Broader Regional Market Metrics

New York Independent
System Operator

March 2015



Highlights

Regional NYISO/PJM RT Scheduling Monthly Value: \$674,813.29
 Regional NYISO/PJM RT Scheduling Year-to-Date Value: \$2,262,438.81

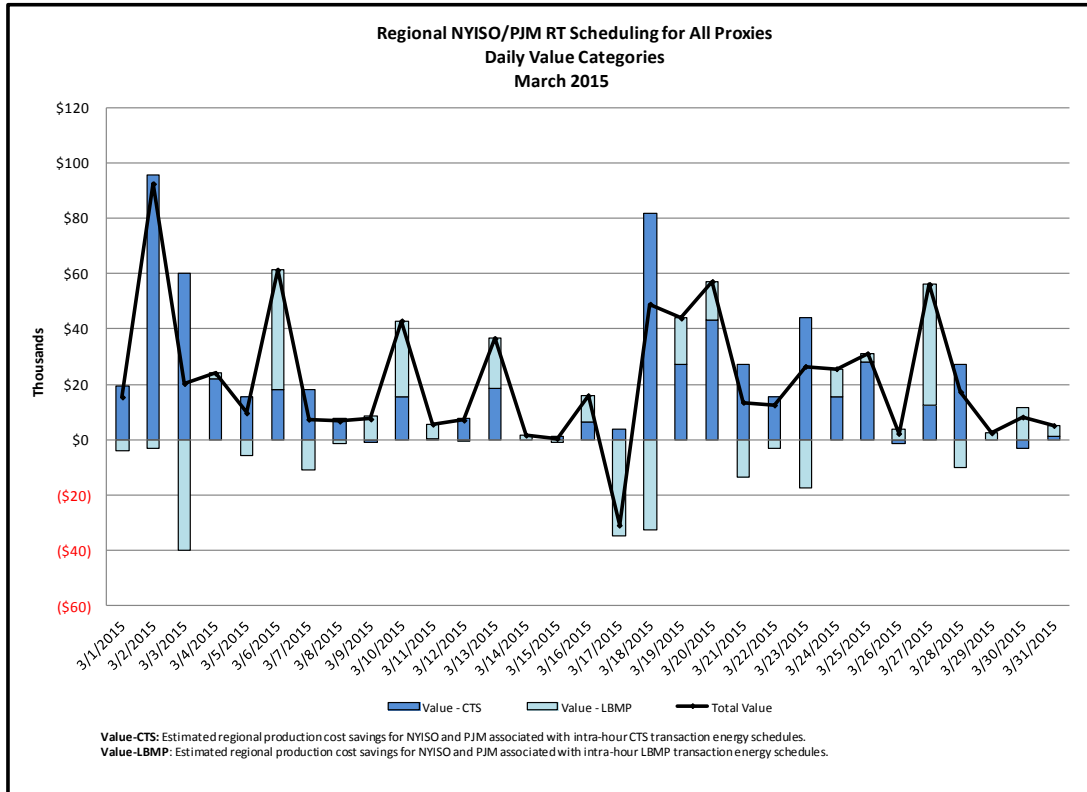
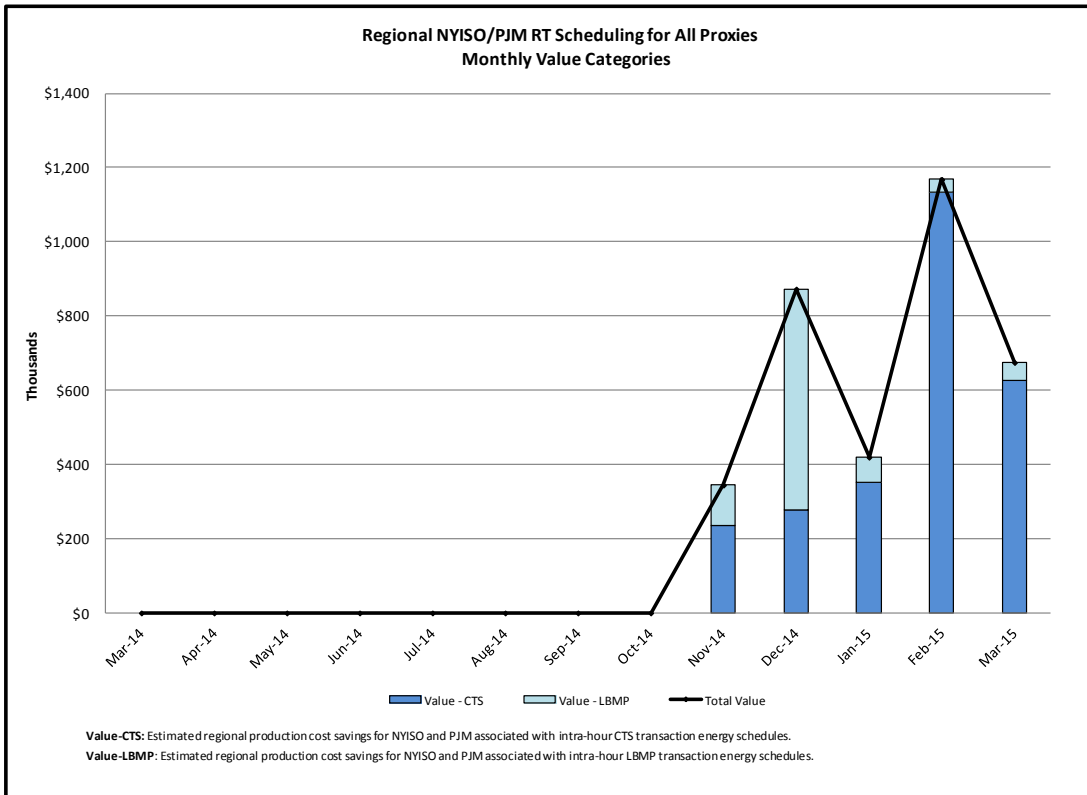
15-Minute Bidding and Scheduling Data¹

Interface	CTS				LBMP			
	Avg Offered (MW)	Avg Scheduled (MW)	Max Offered (MW)	Max Scheduled (MW)	Avg Offered (MW)	Avg Scheduled (MW)	Max Offered (MW)	Max Scheduled (MW)
Keystone	908	55	1351	772	2602	1608	4224	3306
All Scheduled Lines	6	2	50	25	989	852	1460	1435



Pricing Data²

Interface	Max Forecasted Price Spread	Min Forecasted Price Spread	Forecasted Price Spreads vs. Real-time Price Spreads							
			< \$-20	\$-20 to \$-10	\$-10 to \$-5	\$-5 to \$0	\$0 to \$5	\$5 to \$10	\$10 to \$20	> \$20
Keystone	\$314.36	(\$948.00)	11.8%	6.7%	9.2%	22.7%	19.5%	7.5%	5.7%	16.9%
HTP	\$632.28	(\$1,098.93)	14.2%	6.9%	8.4%	20.1%	17.5%	7.4%	6.4%	19.1%
NEPTUNE	\$972.03	(\$947.81)	13.3%	7.9%	9.5%	21.9%	19.9%	8.5%	7.0%	12.0%
VFT	\$200.48	(\$1,044.53)	14.4%	8.1%	9.6%	21.8%	18.4%	8.0%	6.9%	12.8%

1. All MW Values include the absolute sum of both imports + exports. Wheels have been excluded.
2. "Forecasted Prices" refer to NYISO's RTC LBMP and PJM's ITCED LMP. "Real-time Prices" refer to NYISO's RTD LBMP and PJM's RTSCED LMP. Forecasted Prices are used during NYISO's RTC evaluation to schedule transactions. Real-time Prices are used to settle transactions. Price Spreads are always calculated as NYISO's LBMP minus PJM's LMP.



Regional NYISO/PJM RT Scheduling for All Proxies

<u>Category</u>	<u>Description</u>
 Value-CTS	Estimated regional production cost savings from the intra-hour (non-TOH) energy schedule changes on CTS bids (Intra-hour CTS Schedule Changes * [NY RTC LBMP - PJM IT SCED LMP]).
 Value-LBMP	Estimated regional production cost savings from the intra-hour (non-TOH) energy schedule changes on LBMP bids (Intra-hour LBMP Schedule Changes * [NY RTC LBMP - PJM IT SCED LMP]).

